

LIBERCOURT

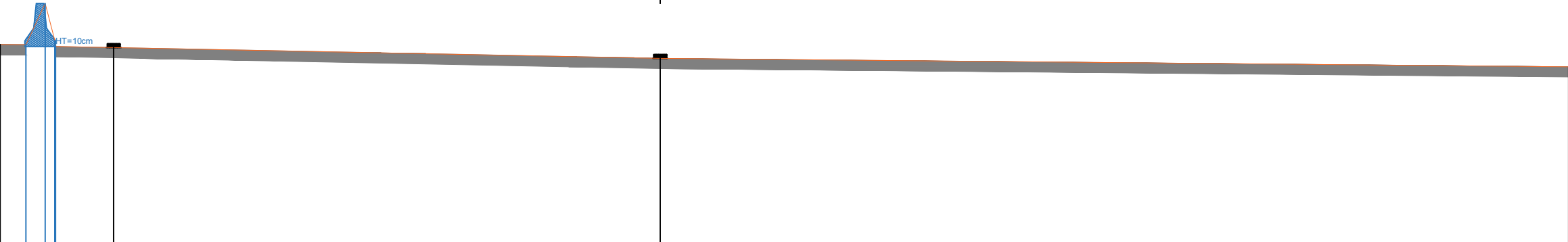
Autoroute A1

Sens Paris -> Lille

Profil P256

indice: 1

Sens Paris -> Lille



Echelle des longueurs : 1/100
Echelle des altitudes : 1/100

PC : 21.00 m

Altitudes TN	24.89	24.89	25.69	24.85	24.83	24.82	24.46
Distances à l'axe TN	-12.908	-12.408	-12.028	-11.828	-10.690	0.000	17.764
Distances partielles TN	0.500	0.380	0.200	1.137	10.690	17.764	